

Is the i-port® right for you or someone you know?

The i-port® aims to improve the health and quality of life for people taking multiple daily injections of prescribed medications.

The i-port® is a practical treatment option for adults and children with diabetes who:

- ⦿ Feel their current treatment interferes with their desired lifestyle
- ⦿ Want freedom from the pain and anxiety of injections
- ⦿ Avoid taking correction doses even if blood sugar levels are high
- ⦿ Want to minimize impact of injection therapy on social activities
- ⦿ Skip meals to avoid injections



Ask your healthcare professional about samples of the i-port® or call Customer Care toll-free at 1-877-763-7678 for more information.

i-port®

INJECTION PORT

It takes the shots for you

i-port® Customer Care makes obtaining i-port® easy on everyone.

- 1 Fill out an i-port® Prescription Order Form. Obtain one from your healthcare professional, call Customer Care at **1-877-763-7678** or download one at **www.i-port.com**.
- 2 Patient and doctor sign completed Prescription Order Form and fax to **1-866-286-1401**.
- 3 i-port® Customer Care takes over:
 - Receives Prescription Order Form
 - Facilitates prescription fulfillment process
 - Sets up a distributor to ship directly to you
 - Follows up on the status of your order
 - Provides additional training tips and assistance
 - Checks on your experience with the i-port®
 - Offers ongoing support

www.i-port.com • 1-877-763-7678



i-port® is registered in U.S. Patent and Trademark Office
©Copyright 2007 - 2008. Patton Medical Devices, LP. All rights reserved.

i-port®

INJECTION PORT

Product Information



rev 0608

The **i-port**[®] Injection Port is a discreet injection delivery device you can use with a syringe or pen. It allows for multiple daily injections without repeated skin punctures.

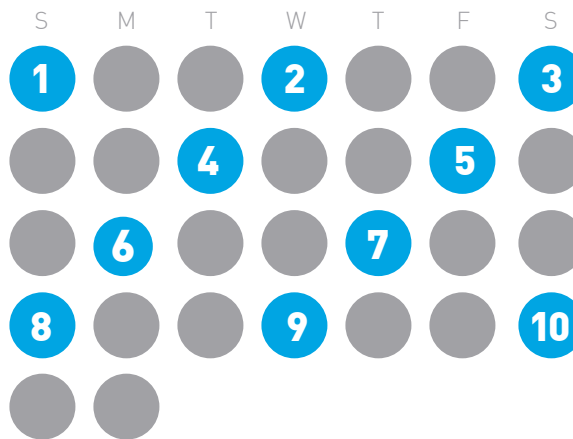
The **i-port**[®] allows you to take your injections with only 1 skin puncture every 3 days.



Impact of Injections

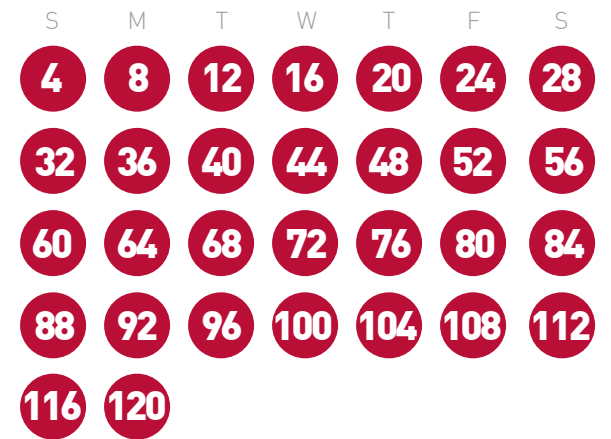
We realize that treating diabetes affects all aspects of your life. The toll from injections quickly adds up and leaves many people physically and emotionally exhausted. With the **i-port**[®] Injection Port, you can *reduce skin punctures to just 1 every 3 days!*

Month *with* the **i-port**[®]



10 skin punctures or

*Month *without* the **i-port**[®]

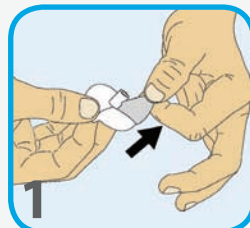


120 skin punctures

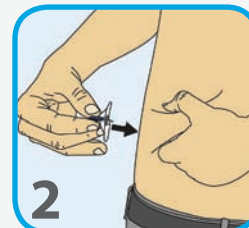
*Based on 4 injections per day

Simple to use

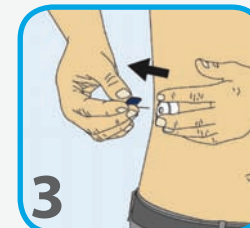
Applying the **i-port**[®] to the body takes only seconds. The **i-port**[®] may be worn for up to 72 hours and is suitable for use on both adults and children.



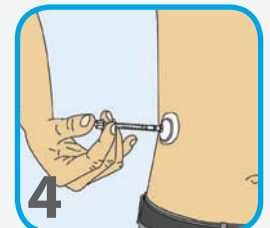
1 Remove the backing from the adhesive pad and then remove the needle guard



2 Tightly pinch skin and insert needle and cannula into the tissue using a fast, non-stop motion



3 Hold the **i-port**[®] firmly in place when removing the insertion needle



4 Inject medication through resealable septum for delivery into subcutaneous tissue